



IGLU FLAGSTAFF GARDENS PREMIUM STUDIO APARTMENTS



SLEEPS 1-2



PRIVATE BATHROOM



FREE UNLIMITED WI-FI



AIR CONDITIONING

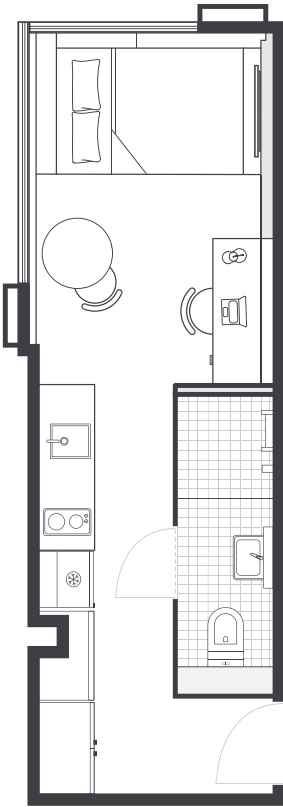


Live close to Melbourne's major universities in a studio apartment with private living space and friends next door.

- Each studio has a private en-suite bathroom and reverse cycle air conditioning (cooling and heating)
- Features well-appointed kitchenette with eating area for self-catering
- Free unlimited high-speed wi-fi is included and available throughout

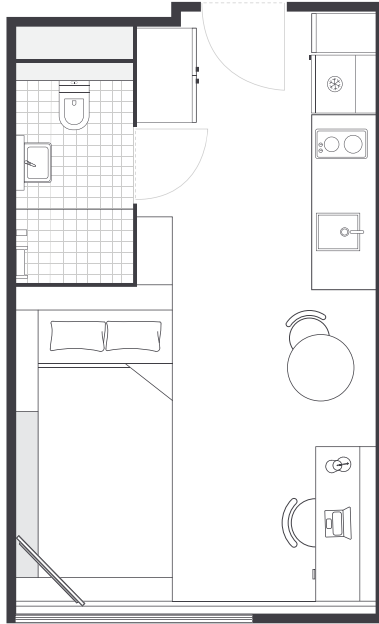
Sample floor plans

Premium Studios
are more spacious
and offer views over
Flagstaff Gardens or
North Melbourne



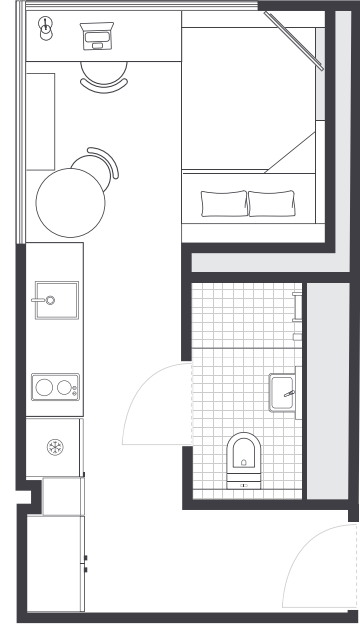
TYPE 1

DOUBLE BED | LEVELS 3-17
APPROX. 21.5m²



TYPE 2

DOUBLE BED | LEVELS 12-17
APPROX. 18.2m²



TYPE 3

DOUBLE BED | LEVELS 12-17
APPROX. 18.2m²

Each premium studio apartment is equipped with:

- › Secure swipe card access
- › Access to high-speed wi-fi
- › SMART TV with Apple TV
- › Under-bed storage
- › Private en-suite bathroom
- › Air-conditioning and heating
- › Study desk, chair and lamp
- › Pinboard and bookshelf
- › Built-in wardrobe and full length mirror
- › Kitchenette with microwave/ convection oven, 2-burner stovetop, refrigerator
- › Kettle, toaster, vacuum cleaner
- › Large windows with blackout and privacy blinds*

EN-SUITE BATHROOM

- › Shower
- › Toilet
- › Basin and mirror
- › Shelving
- › Towel rail
- › Exhaust fan
- › Storage cabinet

All images are illustrative only and indicative of Iglu's finishes and features



ONE HANDY ALL-INCLUSIVE FEE

Your weekly rent includes all of this plus your water, electricity, gas, access to 24/7 onsite support and lots of cool events.



Iglu Flagstaff Gardens. 7 Batman Street, West Melbourne VIC 3003

+61 3 9000 8795 flagstaffgardens@iglu.com.au

#livecoolatiglu | iglu.com.au/southyarra